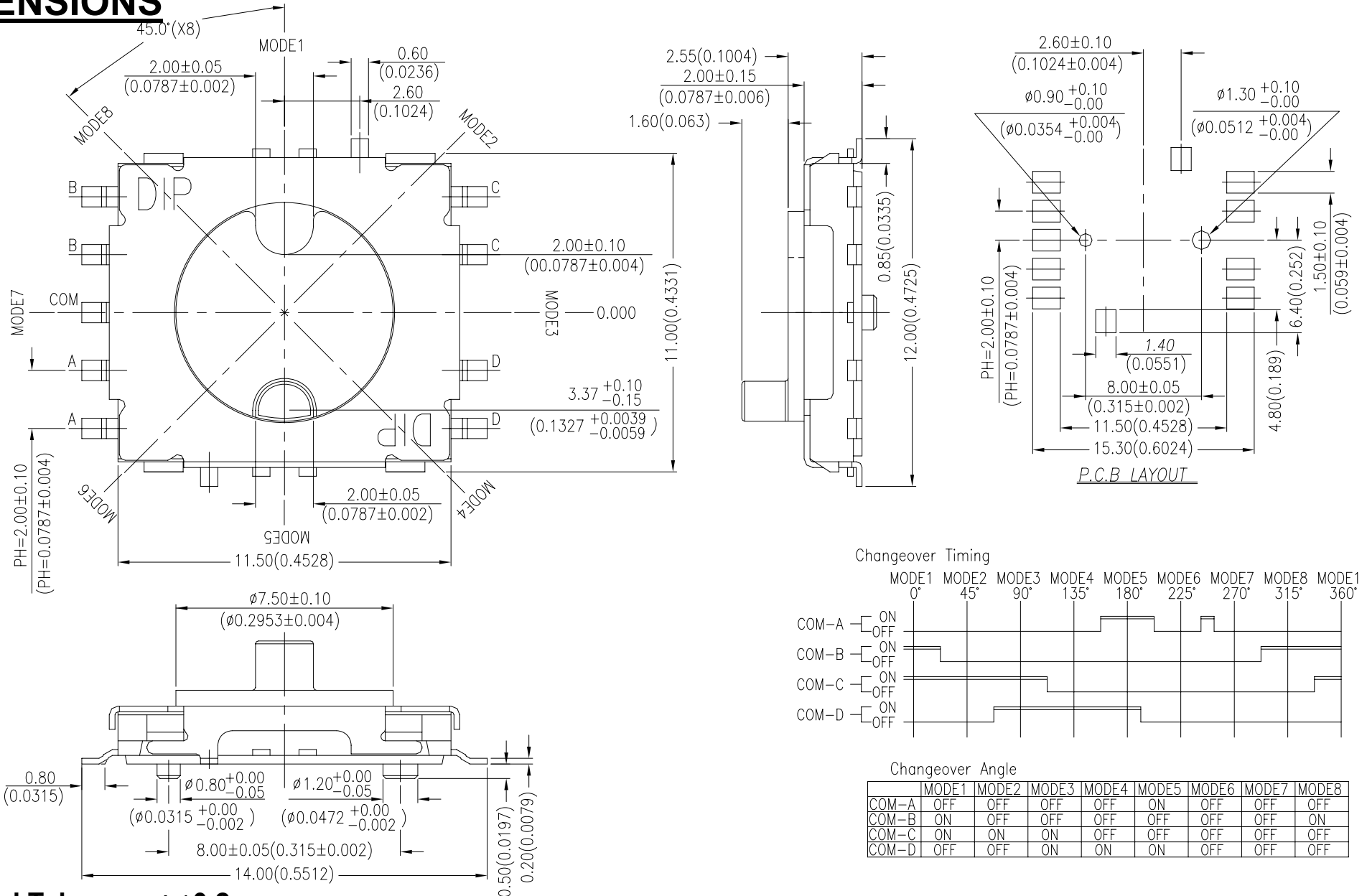


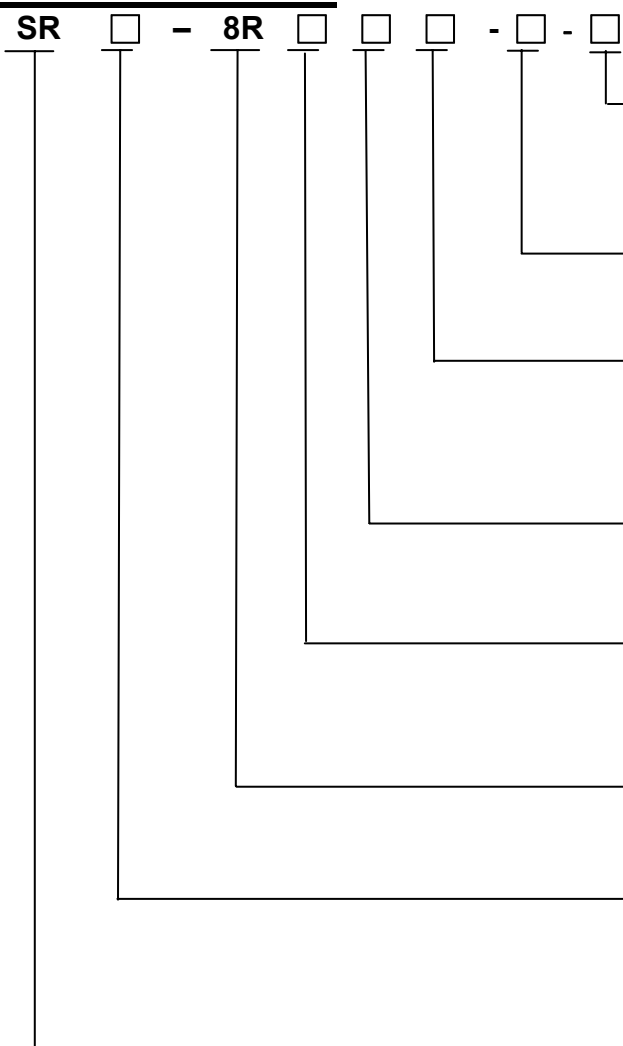
SRM SERIES



DIMENSIONS



HOW TO ORDER



Package Style:
T/R=Tape & Reel

Soldering:
V=Lead Free Solderable

=Non-click Actuation Force & Color: **Black**
N=130 \pm 50gf Actuation ; **Brown**
B=40 \pm 30gf Actuation ; **Blue**

G=With Ground Terminal
=Without Ground Terminal

Circuit:
7 = 7 Circuits , **Black**
8 = 8 Circuits , **Brown**

Number of Steps:
8 =8 Steps

Terminal Type
M=S.M.T

LOW-Profile Rotary Switch

SPECIFICATION

△MECHANICAL

Mechanical Life: 200mΩ max. 10,000 cycles

Operating Force: N=130±50gf

B=40±30gf

△ENVIRONMENTAL

Operation Temperature: -20°C to +80°C

Storage Temperature: -40°C to +85°C

△ELECTRICAL

Electrical Life: 200mΩ max. 10,000 cycles

Rating: 10mA, 5VDC

Contact Resistance: (a)70mΩ max. (Initial)

(b)200mΩ max. (final)

Insulation Resistance: 100MΩ min. at 500VDC

Voltage Proof: 300VAC for 1 minute

MATERIAL

△COVER: Nickel silver

△BASE / STEM: UL94V-0 Nylon High-Temp Thermoplastic

Color: Black

△CONTACT : Alloy Copper

△SPRING PLATE: Stainless Steel

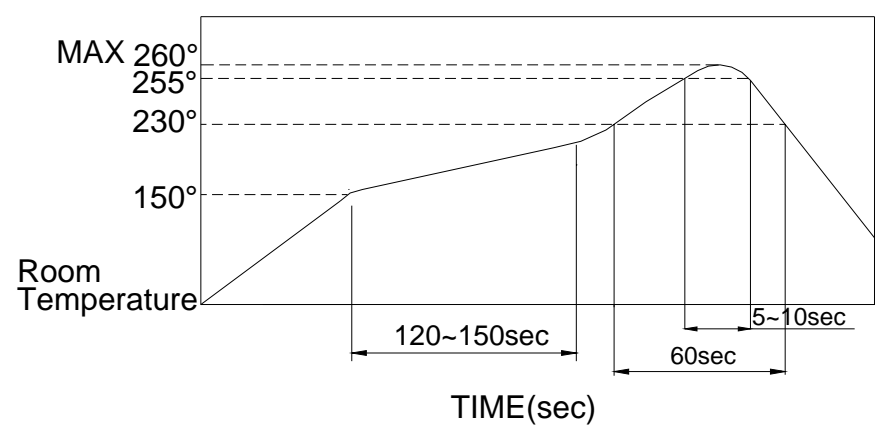
△TERMINAL: Brass with silver plated.

SOLDERING PROCESS

△HAND SOLDERING : Use a sold iron of 30 watts, controlled at 350°C approximately 5 seconds while applying.

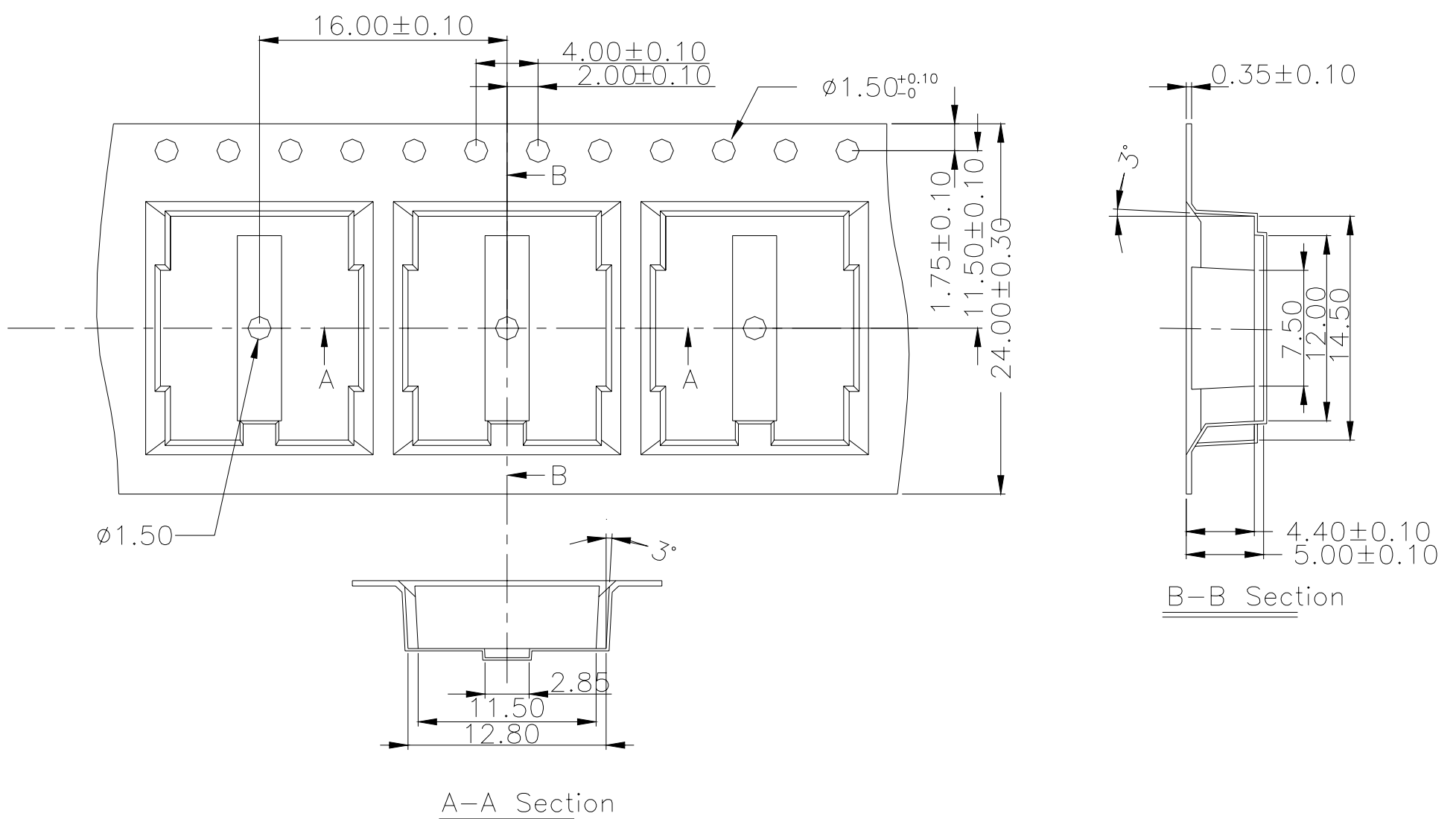
△REFLOW SOLDERING: When applying reflow soldering, the peak temperature or the reflow over should be set at 260°C max.

△Reflow Temperature Profile:



PACKING

Tape and Reel: 900 pcs/reel



General Tolerance : ±0.1mm